



Knürr ConAct®

19" Network Wall Enclosure

1.100 to 1.105



19" Network Wall Enclosure

Knürr ConAct®

Strong points 1.100

Knürr ConAct®

Wall Enclosure 1.104

Knürr ConAct® Accessories

Extrusions 1.105

Door 1.105

Top Cover / Bottom Cover 1.105

Earthing Set 1.105

Knürr ConAct® Strong points

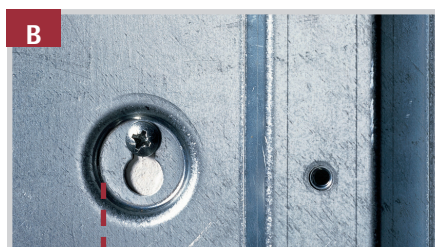
Unpack – and start with the network installation within minutes



ACT00024

Economic efficiency

- Savings of up to 50% of transport volume with flat-pack packing (see figure A)
- Easy transport right up to assembly with space-saving packaging
- Small packages – low storage space



ACT00031

“One-Person” Setup

- No unnecessary removal of enclosure parts as it is delivered part dismantled
- Rear panel mounting without measuring using drill hole template
- Easy assembly with:
 - Keyhole punching on the rear panel (see figure B)
 - Push-in technology for mounting rails and covers
 - Symmetrical enclosure setup



ACT00004

1.
Hang rear panel



ACT00005

2.
Fix supports and vertical extrusions



ACT00030



ACT00033

Cabling made easy

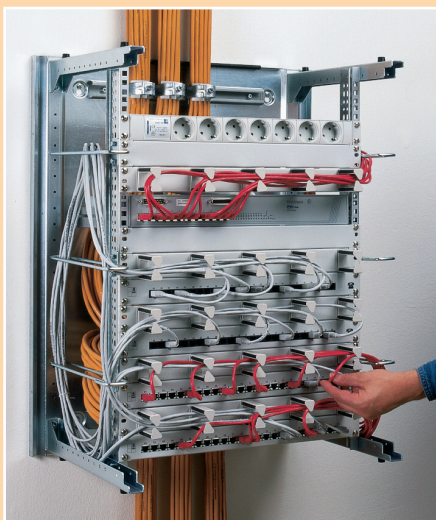
- All-side access guarantees convenient mounting of the components
- Easy cable management with on-site existing cables with open construction design
- Orderly cable management with spacious side jumpering area and cable clamping rails as accessories (see figures C+D)



ACT00032

Customer specification

- Individually configurable with color variants or cover mounting holes
- 19" or metric installation possible
- 19" vertical extrusions can be depth adjusted on 25 mm increment
- Easy door stop change with shift bolt system (see figure E)
- Ventilation concept can be expanded at later stages with optional active ventilation unit



ACT00006

3.
... cable and mount components



ACT00007

4.
fit covers



ACT00008

5.
... and the installation is ready!



ACT00017

Maintenance-friendly

- Easy access for servicing is also guaranteed by removing the side panels
- Enclosure can be locked with security lock
- Door opening angle >180°



ACT00034



ACT00033

Accessories

- Easy integration of accessories, e.g. socket strips with screw-on points on the vertical extrusion or on the rear panel (see figure F)
- Accessories available for orderly cable management, e.g. cable routing board or jumpering bracket (see figure G)
- Comprehensive standard accessories range available, e.g. shelves, drawers, socket strips, etc.

Application examples:



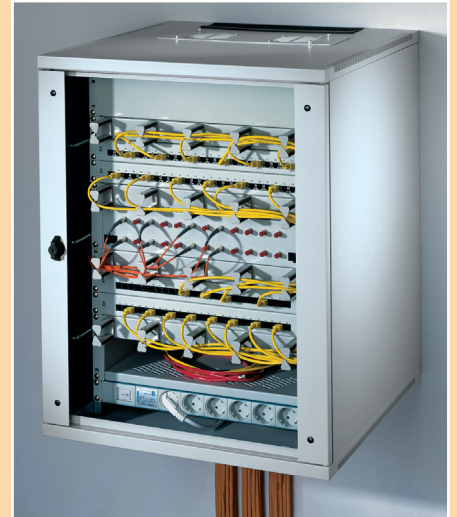
ACT00020

Glass door with trims in special colors



ACT00025

Design door with perforation



ACT00021

Enclosure with active ventilation unit

Knürr ConAct®
Technical data

- In acc. with IEC 297
- With fixed 19" installation
- For components in acc. with IEC 297-3
- Removable covers
- Covers above and below with side vent slots

■ **For installing**

- 19" components on the front
- 19" components on the rear, optionally with additional 19" vertical extrusion set
- Equipment with max. construction width of 450 mm
- Installation accessories

■ **19" enclosure in acc. with IEC 2973**

- Heights: 6 U / 9 U / 12 U / 15 U / 18 U / 21 U / 24 U (1 U = 44.45 mm)
- Width: 482.6 mm (19")

■ **External dimensions**

- Heights: 352 mm / 486 mm / 619 mm / 752 mm / 886 mm / 1019 mm / 1152 mm
- Width: 600 mm
- Depths: 400 mm / 500 mm / 600 mm

■ **Jumpering space**

- Front: 100 mm (adjustable)
- Side: 55 mm

■ **Static load rating**

500 N

■ **Protection rating**

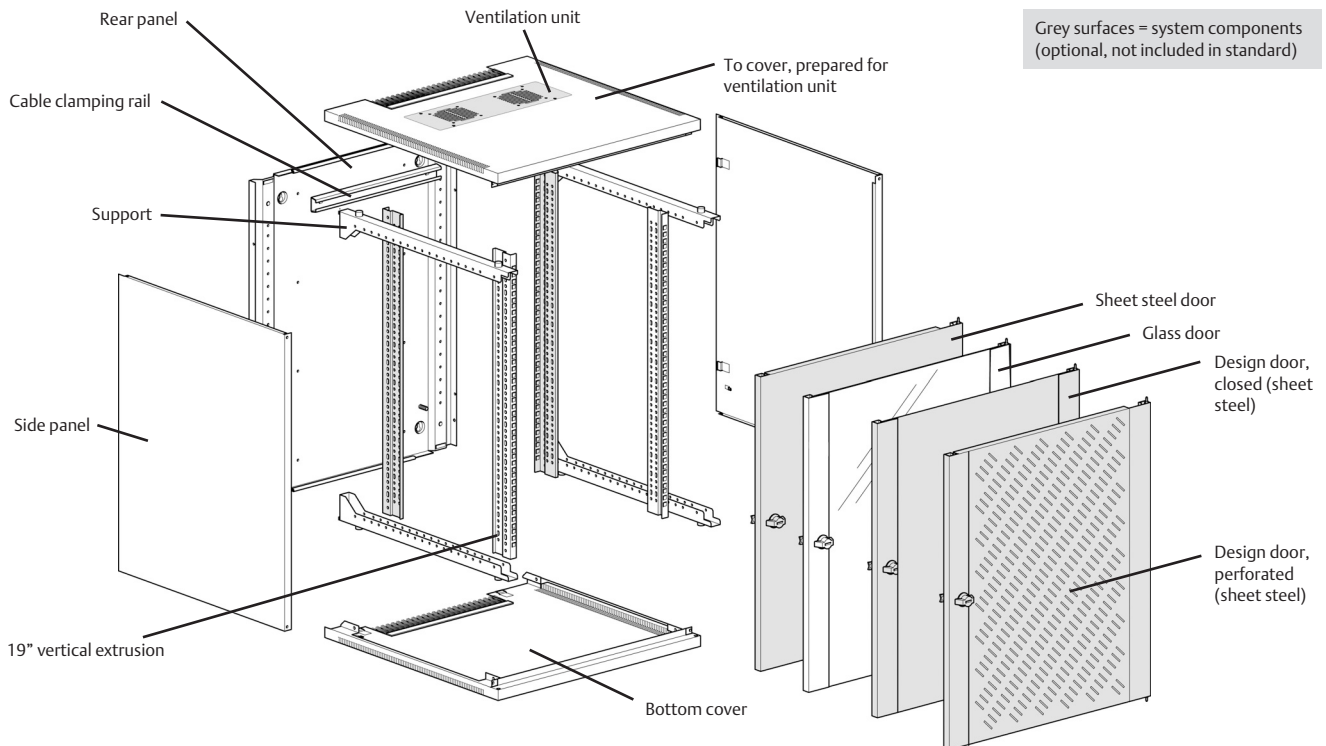
IP 20

■ **Standards**

Earthing, VDE 0100 T 540
 EN 60950, EN 60529

■ **Configuration**

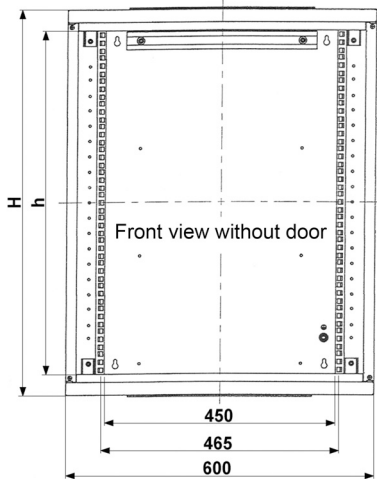
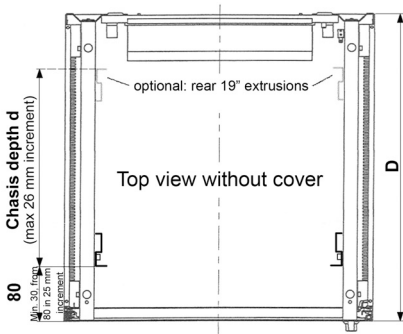
Stationary, wall mounting



ACT00038



ACT20053



ACT20041

Knürr ConAct® Standard 19" Wall Mounting Rack

- For components in acc. with IEC 297-3
- Accessible from all sides, covers can be quickly removed
- Cable routing via brush strip on top cover and bottom cover
- Ventilation unit, optional (quick and easy to upgrade)
- Front door with single safety glass panel, lockable

- Removable covers, powder-coated sheet steel
- Front door, single safety glass panel, textured
- 19" vertical extrusions, zinc-passivated sheet steel

Color
RAL 7035 light gray

Jumpering space
80 mm (minimum 32, from 80 on the 25 mm increment)

Supply schedule
1 rear panel
4 mounting rails
2 19" sheet steel vertical extrusions
1 top cover, prepared for ventilation unit
1 bottom cover, closed
2 side panels
1 glass door
1 cable clamping rail
Mounting material

Load rating
500 N static

Protection rating
IP 20

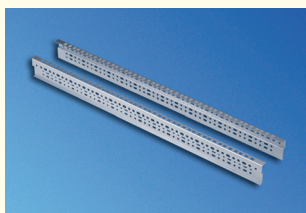
Material/ Finish
- Rear panel and basic frame, sheet steel, zinc-passivated

How supplied
Part assembled

W	H	D	U	h	d(max.)	kg	Model	Order no.	UP
600	352	400	6	270	235	16	With glass door	05.010.000.1	1 unit
600	486	400	9	404	235	19	With glass door	05.010.001.1	1 unit
600	619	400	12	537	235	22	With glass door	05.010.002.1	1 unit
600	752	400	15	670	235	25	With glass door	05.010.003.1	1 unit
600	886	400	18	804	235	28	With glass door	05.010.004.1	1 unit
600	1019	400	21	937	235	31	With glass door	05.010.005.1	1 unit
600	1152	400	24	1070	235	34	With glass door	05.010.006.1	1 unit
600	352	500	6	270	335	18	With glass door	05.010.007.1	1 unit
600	486	500	9	404	335	21	With glass door	05.010.008.1	1 unit
600	619	500	12	537	335	24	With glass door	05.010.009.1	1 unit
600	752	500	15	670	335	28	With glass door	05.010.010.1	1 unit
600	886	500	18	804	335	31	With glass door	05.010.011.1	1 unit
600	1019	500	21	937	335	34	With glass door	05.010.012.1	1 unit
600	1152	500	24	1070	335	37	With glass door	05.010.013.1	1 unit
600	352	600	6	270	435	20	With glass door	05.010.014.1	1 unit
600	486	600	9	404	435	23	With glass door	05.010.015.1	1 unit
600	619	600	12	537	435	27	With glass door	05.010.016.1	1 unit
600	752	600	15	670	435	30	With glass door	05.010.017.1	1 unit
600	886	600	18	804	435	34	With glass door	05.010.018.1	1 unit
600	1019	600	21	937	435	37	With glass door	05.010.019.1	1 unit
600	1152	600	24	1070	435	41	With glass door	05.010.020.1	1 unit

Dimensions in mm: W = Width, H = Height, D = Depth, h = installation height, d = useful depth, L = length, U = standard height unit, 1 U = 44.45 mm, UP = unit of packaging, kg = weight, = Express item

Conversion: 1 mm = 0.03937 inch, 1 kg = 2.2046 pound



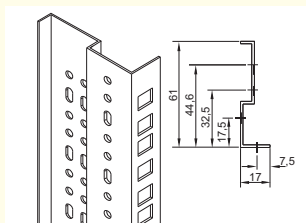
ACT00029

Knürr ConAct® 19" vertical extrusion

– For front and/or rear installation in the enclosure

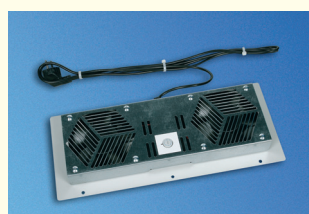
■ **Material/Finish**
Sheet steel, 1.5 mm, zinc-passivated

■ **Supply schedule**
2 vertical extrusions
Mounting material



ACT00035

W	H	D	U	h	d	kg	Model	Order no.	UP
			6					05.010.321.9	1 set
			9					05.010.322.9	1 set
			12					05.010.323.9	1 set
			15					05.010.324.9	1 set
			18					05.010.325.9	1 set
			21					05.010.326.9	1 set
			24					05.010.327.9	1 set



ACT20052

Knürr ConAct® Ventilation unit with thermostat

– Easy later installation of the fan unit in the top cover
– With two axial fans
– With thermostat
– Available in two different performance classes

■ **Material/Finish**
Sheet steel, zinc-passivated

■ **Single fan technical data**
Type 1
- Volume current (free blowing): 162 m³/h per fan
- Noise (free blowing): 37 dB(A)

Type 2 (quiet)
- Volume current (free blowing): 120 m³/h per fan
- Noise (free blowing): 32 dB(A)

■ **Technical data: Thermostat**
- Setting range: 0 to 60 °C
- Mains supply: 240 V / 50 Hz
- Nominal current: 16 A

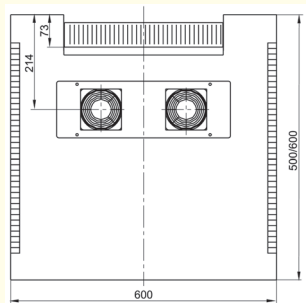
■ **Color**
RAL 7035 light gray

■ **Supply schedule**
1 ventilation unit ready for connection wired, with thermostat

■ **How supplied**
Assembled, wired and tested



ACT20056



ACT00041

W	H	D	U	h	d	kg	Model	Order no.	UP
							Type 1	05.010.306.1	1 set
							Type 2 (quiet)	05.010.307.1	1 set



ACT20027

Knürr ConAct® Sheet steel door

– For use instead of glass door

■ **Material/Finish**
Sheet steel, powder-coated texture

■ **Color**
RAL 7035 light gray

■ **Supply schedule**
1 steel door
Mounting material

■ **How supplied**
Flat-packed kit

■ **Note**
In project cases we also deliver our ConAct wall enclosure with sheet steel door. Please contact us at your leisure.



ACT20054

W	H	D	U	h	d	kg	Model	Order no.	UP
			6					05.010.421.1	1 unit
			9					05.010.422.1	1 unit
			12					05.010.423.1	1 unit
			15					05.010.424.1	1 unit
			18					05.010.425.1	1 unit
			21					05.010.426.1	1 unit
			24					05.010.427.1	1 unit



ACT00026

Knürr ConAct® Earthing set

– For earthing all covers on the enclosure frame

■ **Supply schedule**
5 earth conductors, 6 mm²
Mounting material

W	H	D	U	h	d	kg	Model	Order no.	UP
								05.010.330.9	1 set



MIR00641

Knürr ConAct® Cable clamping rail

– For cable clamping using U-clamps, cable clamping bars or hammer-head threaded plate
– For mounting on rear panel

■ **Material/Finish**
Sheet steel, zinc-passivated

■ **Supply schedule**
1 cable clamping rail
Mounting material

■ **How supplied**
Flat-packed kit



ACT00006_A

W	H	D	U	h	d	kg	Model	Order no.	UP
								05.010.340.9	1 set

